

UTC-520

21.5" Ubiquitous Touch Computer UTC-520G with Intel® Pentium® N4200 UTC-520H with Intel® Core™ i5-8365UE



DeviceOn/iService



Features

- Low-power, fanless system design
- Built-in Intel® Pentium N4200 (UTC-520G)
- Built-in Intel® Core™ i5-8365UE (UTC-520H)
- 21.5" monitor with 16:9 widescreen display
- IP65-rated front panel for water and dust resistance
- All-in-one aluminum extrusion design
- Supports both landscape and portrait screen orientations
- VESA 100 mm standard mounting holes for varied mounting demands
- Side groove design for integrating peripherals
- Optional 400-nit LCD panel
- Support DeviceOn/iService software for remote device management
- i7 sku is available for H platform
- H platform supports TPM 2.0

Introduction

UTC-520 is an all-in-one computer with an Intel® Core™ i5-8365UE processor, widescreen LCD touch panel, and side groove design for integrating optional peripherals. Designed for diverse self-service, content broadcasting, and interactive signage applications, UTC-520 systems can be deployed in a wide range of usage scenarios for enhancing customer satisfaction, furthering brand equity, and maximizing business profits. Advantech's DeviceOn/iService is a next-generation unified device management solution based on the WISE-DeviceOn platform. Moreover, Advantech DeviceOn/iService Software is a next-generation unified device management solution based on the WISE-DeviceOn platform. With support for batch operations and multi-device control, DeviceOn/iService enables easy device configuration and deployment for convenient remote device management.

Specifications

Model	UTC-520G		UTC-520H
System	CPU	Intel® Pentium® N4200 (UTC-520G)	Intel® Core™ i3-8145UE (Available) Intel® Core™ i5-8365UE (UTC-520H) Intel® Core™ i7-8665UE (Available)*
	Base Frequency	1.1 GHz (Quad-Core)	1.60 GHz (i5-8365UE/Quad-Core)
	Cache	L2 Cache 2MB	L3 Cache 6MB
	Memory	1 x 204 pin SO-DIMM DDR3L 1867 MHz up to 8GB	1 x 260 pin SO-DIMM DDR4 2400 MHz up to 32GB
	HDD	1 x 2.5 internal SATA HDD bay	
	Network (LAN)	2 x Gigabit Ethernet Ports, Intel I210AT (supports Wake on LAN)	2 x Gigabit Ethernet Ports, Intel I210IT; Intel I219LM (supports Wake on LAN)
	I/O	2 x RS-232 COM (RS-422/485)* 2 x USB2.0 / 2 x USB3.0 2 x Gigabit Ethernet (RJ-45) 1 x VGA 1 x HDMI 1 x Audio Line-out x 1, Mic-in x 1	2 x RS-232 COM (RS-422/485 optional) 4 x USB 3.1 2 x Gigabit Ethernet (RJ-45) 1 x HDMI 1 x Audio Line-out 1 x Mic-in
	Stereo Speaker	2 x 3W	
Mechanical	Expansion	1 x Full-size MiniPCIe / mSATA 1 x M.2 E-key 2230	1 x M.2 E-key 2230 1 x M.2 B-key 2280 (NVMe PCIe x 4) / M.2 B-Key 3042 LTE module supports USB 2.0 only (optional)
	Mount Options	VESA 100 x 100 mm	
	Dimensions (W x H x D)	517.6 x 313.5 x 43.5 mm	
Board Features	Weight	8 kg (17.6 lb)	
	Watchdog Timer	65536 intervals, 0 ~ 65535 sec	
Operating System	TPM	N/A	TPM2.0 (SLB9670XQ2.0)
		Win 10 IoT Enterprise Android 10 Linux Ubuntu 20.04	Windows 10 IoT Enterprise Linux Ubuntu 20.04
Environmental	Operating Temperature	0 ~ 40 °C/32 ~ 104 °F	
	Relative Humidity	10 - 95% @ 40 °C/104 °F, non-condensing	
	Shock	Operating 10G peak acceleration (11ms duration), follow IEC 60068-2-27	
	Vibration	Operating Random Vibration Test 5 ~ 500Hz, 1Grms @with HDD; 2Grms @with SSD, follow IEC 60069-2-64	
	EMC/Safety	CE (RED Compliance), EN 61000-6-2: 2005 /AC: 2005, FCC, UL, CB, CCC, BSMI	
Power Supply	Front Panel Protection	IP65 rated/NEMA4 compliant	
	Input Rating	12~24V, 7 A (84W ITE adapter)	
LCD Display	Power Consumption	Typical 35W Max 40W	Typical 40W Max 50W
	Size/Type	21.5" TFT LCD with LED backlight	
	Max. Resolution	1920 x 1080	
	Max. Color	16.7M	
	Pixel Pitch (H x V)	248.25 x 248.25	
	Brightness	250 nits (400 nits optional)	
Touchscreen (PE/RE)	Viewing Angle	178°/178°	
	Type	Projected capacitive, Single point Analog Resistive 5-wires touch	
Touchscreen (PE/RE)	Light Transmission	88% ± 2%, 80% ± 3%	
	Controller	USB interface	

Specifications (Cont.)

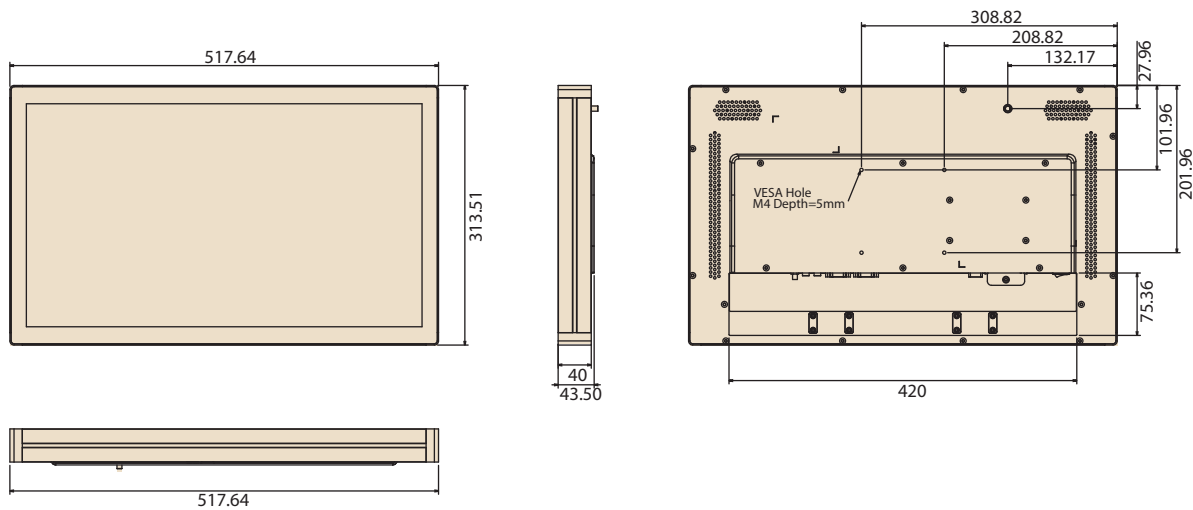
DeviceOn/iService Remote Device Management	Operating System	Windows 10
	Common Controls (Reboot, Shutdown)	✓
	Remote desktop	✓ (VNC)
	Audio Controls	✓*
	Connection Status	✓
	Hardware Status	✓*
	Hard Disk Status	✓*
	Batch Operation Support	✓
	OTA Storage Management	FTP
	OTA Software Updates	✓
	Software Watchlist	✓
	Software Start/Stop	✓*
	Peripherals Watchlist	✓*

*Dependant on device model

Note: DeviceOn/iService software must be downloaded from the Advantech website at <https://www.advantech.com/search/?q=DeviceOn%2FiService&st=support&sst=Utility>

Dimensions

Unit: mm



Ordering Information

Part Number	Description
UTC-520G-PE	21.5" 9H PCT.T/S with Intel® Pentium® N4200, 4GB RAM, IT Adapter
UTC-520GP-ATB0E	21.5" 7H PCT.T/S with Intel® Pentium® N4200, 4GB RAM, IT Adapter
UTC-520GR-ATB0E	21.5" Resi. T/S with Intel® Pentium® N4200, 4GB RAM, IT Adapter
UTC-520H-PE	21.5" 9H PCT.T/S with Intel® Core™ i5 8365U, 8GB RAM, IT Adapter
UTC-520HP-ATB0E	21.5" 7H PCT.T/S with Intel® Core™ i5 8365U, 8GB RAM, IT Adapter
UTC-520HR-ATB0E	21.5" Resi. T/S with Intel® Core™ i5 8365U, 8GB RAM, IT Adapter
1702002600	Power Cord 3P UL/CSA(USA) 125V 10A 1.83M 180D
1702002605	Power Cord 2P FRANCE 10A/16A 220V 1.83M 90D
1700000596	Power cable, CCC, 3P, 10A, 250V, 183 cm (China)
1700018704	Power cable, BSI, 2P, 10A, 250V, 180 cm (UK)
1960069544N001	I/O cover for UTC-520 series

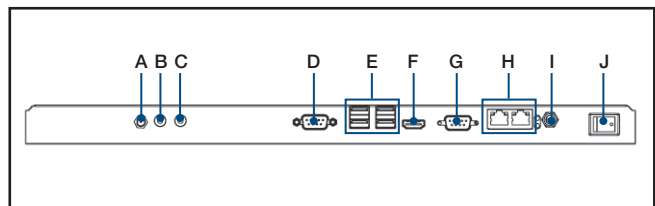
Peripherals for UTC-500 Series

Part Number	Description
UTC-P01-A1E	5MP camera module (via USB)
UTC-P02-A0E	Magnet strip reader (via USB)
UTC-P03-A1E	RFID/NFC reader (via USB)
UTC-P06-A2E	Smart card reader (via USB)
UTC-P07-A4E	2D barcode module (Honeywell) (via USB)
UTC-P09-A0E	Fingerprint reader (via USB)
UTC-P21-A2E	4-in-1 barcode + RFID + MSR + card reader module

Optional Accessories

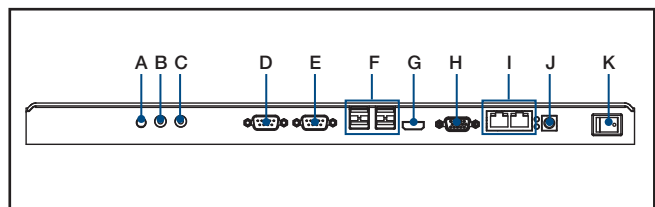
Part No.	Description
96PD-00824	UTK-700 Desktop Stand (w/o Printer)
96PD-00825	UTK-700 Extension Tower (For 96PD-00824 only)
UTC-520-STAND1E	Desktop stand for UTC-515/520
UTC-S01-STAND	Desk Stand for 100 x 100 / 75 x 75 mm
UTC-T01-STANDE	Triangle shape floor stand
UTC-H01-STANDE	H-shaped floor stand
UTC-WALL-MOUNT1E	Wall Mount kit for UTC-515/520
UTC-WALL-MOUNT3E	Wall Mount kit for UTC-515/520

Fully- Integrated I/O (UTC-520H)



- A. Antenna port
- B. Line-out
- C. Mic-in
- D. COM2
- E. 4 x USB 3.1
- F. HDMI
- G. COM1
- H. 2 x LAN
- I. DC-in
- J. Power switch

Fully- Integrated I/O (UTC-520G)



- A. Antenna Port
- B. Line-out
- C. Mic-in
- D. COM2
- E. COM1
- F. USB 3.0 x 2, USB 2.0 x 2
- G. HDMI
- H. VGA
- I. LAN Ports x 2
- J. DC Input
- K. Power switch

UTC-520 WiFi Ordering Information

Part No.	Description
UTC-WIFI-A4E	EWM-W163M201E 802.11ac/a/b/g/n 2T2R WIFI with BT 4.1 QCA6174A, M.2 2230

DeviceOn/iService

Unified Remote Device Management Software



Features

- Supports Advantech devices equipped with Windows, Android, and Linux OS
- Flexible device, location, user, and permissions management
- Enables remote monitoring and control of hardware, software, and peripherals
- Supports over-the-air (OTA) firmware and software updates
- Ensures quick, easy, and secure device onboarding
- RESTful APIs for third-party system integration

Introduction

Advantech's DeviceOn/iService is a next-generation unified device management solution based on the WISE-DeviceOn platform. Designed to enable centralized monitoring and remote management, DeviceOn/iService supports Advantech devices equipped with Windows, Linux, or Android operating systems. The software also supports the management of applications and integrated peripherals, such as a barcode scanner, card reader, camera, and printer. Users can remotely access and control connected devices, take screenshots, rollout OTA upgrades, and use remote desktop capabilities for troubleshooting from any location at any time. Moreover, DeviceOn/iService supports batch operations to facilitate the management of multiple devices simultaneously for easy and convenient device configuration and deployment.

Total Management



Devices & Hardware

- Windows, Linux, Android
- Hardware, storage, battery



Software & Peripherals

- Software monitoring & access
- Screens, USB devices, printers



Open for Expansion

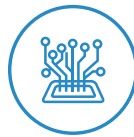
- Peripheral integration
- Open APIs for integration

Remote Access



Real-Time Monitoring

- Connection/hardware status
- Software/peripheral status
- Failure notifications



Remote Controls

- Power controls
- Audio, backlight controls
- Software controls



Troubleshooting

- Screenshots
- Remote desktop support

Operational Efficiency



OTA updates

- System/software updates
- File repository management
- App store



Batch Controls

- 1-to-many batch reboot, etc.
- Time-saving tasks



Setup Booster

- Software/peripheral watchlist
- Roles, rule templates

Note: Some functions may vary according to the product

System Architecture

